

Intella

Search, Explore, Report!



Intella's powerful indexing search engine and its unique visual presentation will enable you to quickly and easily search and review email and electronically stored information to find critical evidence and visualize relevant relationships!

Index

Intella allows you to index and search all file contents and metadata

- Index mail sources, local and network drives
- Support for many different file types
- Various languages
- Deduplicate results based on MD5 hash

Search

Intella's powerful search options enable rapid, thorough and customized discovery

- Search in specific attributes or segments
- Complex, multi-term searches
- Facets facilitate browsing by item properties
- Tagging single or multiple items

Keyword search

Facet search

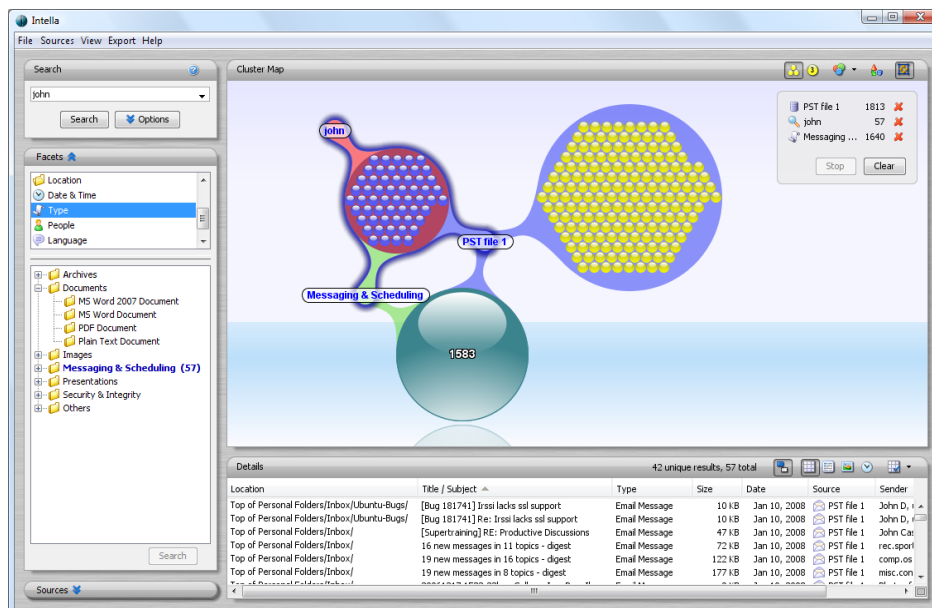
Find data based on time, filetype, user-defined tags and more

Values for selected facet

With a preview of relevant results

Your sources

Work with several sources at once



Selections

Shows the parts of your search query

Cluster Map

Gives structured insight in the results of your search

Details panel

A conventional table-view of your results

View

Intella's unique Cluster Map presents search results in an easy-to-understand visual format that immediately illustrates relevant relationships and facilitates and guides deeper investigation

- Comprehensive, intuitive Cluster Map view
- Immediate previewing
- Table, list and thumbnail view
- Export and report results



Intella is a product of Vound, LLC
www.vound-software.com

Please turn over for more details!



Intella

Search, Explore, Report!

Index

Index and search all file contents and metadata

Mail and hard drive sources

- ✓ Microsoft Outlook (.pst)
- ✓ Exchange (.ost) (offline)
- ✓ Outlook Express (.dbx)
- ✓ Lotus Notes (.nsf)
- ✓ IMAP
- ✓ Saved email (.eml)
- ✓ Local and network drives

Many different file types

- ✓ MS Office Word
- ✓ MS Office Excel
- ✓ MS Office PowerPoint
- ✓ Plain text
- ✓ HTML
- ✓ XML
- ✓ RTF
- ✓ PDF
- ✓ MS Office Visio
- ✓ MS Works
- ✓ MS Publisher
- ✓ OpenOffice
- ✓ Corel Office
- ✓ Archives (zip, gzip, bzip2, tar, rar)

Various languages

- ✓ Western (English, German, French, Dutch)
- ✓ Chinese
- ✓ Japanese
- ✓ Korean

Indexing options

- ✓ Index and search all file content, metadata, and attachments
- ✓ Extract images embedded inside documents
- ✓ Cache images (bmp, jpeg, gif, png) for thumbnail viewing
- ✓ calculate MD5 hashes

Deduplicate results based on MD5 hash

Search

Rapid, thorough and customized discovery

Search in specific attributes or segments

- ✓ Text
- ✓ Title / subject
- ✓ Summary & description
- ✓ Path & file name
- ✓ Authors & email names
- ✓ Email headers

Keyword list

Complex, multi-term searches

- ✓ “And” - “Or” - “Not”
- ✓ Phrase search
- ✓ Grouping
- ✓ Fuzzy searches
- ✓ Proximity
- ✓ Field-specific
- ✓ Single & multiple character wildcards

Browsing by facets

- ✓ Relevant keyword suggestions
- ✓ Tags
- ✓ MD5 Hashes
- ✓ Sources
- ✓ Locations
- ✓ Date & time (ranges)
- ✓ File type
- ✓ Size
- ✓ Language
- ✓ People (author, email address)

Tagging single or multiple items

System requirements

- ✓ Windows 2000, XP, or Vista
- ✓ Intel Pentium 4, 2 GHz (Core Duo recommended)
- ✓ 1 GB RAM (2 GB recommended)
- ✓ In order to index NSF files, Lotus Notes 7.0 or higher is required

View

See results in a format that facilitates investigation

Comprehensive, intuitive *Cluster Map view*

Table view displays results as a sortable table with columns:

- ✓ Location
- ✓ Name
- ✓ Title / subject
- ✓ Type
- ✓ MIME type
- ✓ Size
- ✓ Date & Time (Content last modified, Content created, File last modified, Sent, Received)
- ✓ Significant terms
- ✓ Source
- ✓ Language
- ✓ Creator
- ✓ Contributor
- ✓ Sender
- ✓ Receiver
- ✓ URI
- ✓ Has attachment
- ✓ Attachments
- ✓ MD5 hash
- ✓ Copies
- ✓ Flagged

List view displays results similar to web search engines

Thumbnail view displays a thumbnail of detected images

Timeline view displays email communication lines

Immediate previewing

- ✓ Contents
- ✓ Headers
- ✓ Properties
- ✓ Attachments
- ✓ Thumbnails
- ✓ Metadata